



Shell in Texas

State profile
February 2025

Home to Shell USA and businesses that are Powering Progress

Shell USA has proudly called Texas home for decades. The heart of our US operations is based in Houston, including our US corporate headquarters and many core businesses. The state is also a showcase for our culture of innovation, with Shell Technology Center Houston one of three research and development hubs for Shell globally.

At Deer Park Chemicals, we have been a neighbor and community partner since 1929, today producing the important building blocks for products used by consumers around the world, in everyday products from soaps, shampoos, household cleaners, plastics, and building supplies.

With wind and solar projects, Shell USA and affiliated companies boost renewable generation in Texas, while expanding our fueling choices so customers have access to affordable, reliable and/or low carbon options to power their lives, including gasoline, diesel, biofuels, sustainable aviation fuel, EV charging and more.

Taxes, royalties and fees¹

2023 (\$)	
Income Tax	17,862,920
Franchise Tax	-
Royalties	1,215,808
Severance	400,614,251
Motor Fuels Tax	13,217,058
Environmental Tax	-
Sales and Tax Use	25,249,951
Property Tax	49,761,647
TOTAL	507,921,636

Social investment

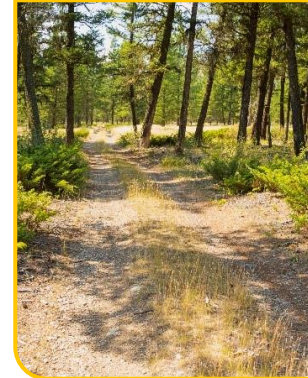
2022-2024 (\$)	
National, Coastal, Rural & Urban Resilience	9,045,418
Workforce Development	1,751,250
Educator Development & Youth Education	2,345,950

Staff counts

2023	
Employees	7,762
Retirees	12,351



Respecting Nature



Gulf-Houston Regional Conservation Plan

The Gulf-Houston Regional Conservation Plan (Gulf-Houston RCP) is a long-term collaborative of environmental, business, and governmental entities working together to implement an ecosystem resilience plan for the Eight-County Gulf-Houston region.* Shell helps fund this initiative annually, which aims to increase protected land in the region. It's also working to grow and support nature-based stabilization techniques, such as low-impact development, living shorelines, and stormwater runoff systems that boost resilience to flooding. The third goal of the plan is to increase carbon sequestration annually through the use of native soils, plants, trees, and oyster reefs throughout the region.



Powering Lives



Deer Park Education Foundation Fun Run

At Shell Deer Park, generations of area residents have built fulfilling careers, supported families, and strengthened our community. We are deeply committed to the communities surrounding our site. Our goal is to be an employer of choice for individuals and believe our workforce should reflect the communities where we operate. We do this by supporting STEM (science, technology, engineering, mathematics) education with the Deer Park Education Foundation Fun Run, partnering with local colleges for scholarships and career fairs, and through our established intern program aimed at developing our next generation of employees.

* Brazoria, Chambers, Galveston, Fort Bend, Harris, Liberty, Montgomery, and Waller Counties

¹ Paid or collected for the state. Various state tax credits are available for use in determining net state tax liability before applicable credits.

Disclaimer: The companies in which Shell plc directly and indirectly owns investments are separate legal entities. In this information sheet, "Shell", "Shell Group" and "Group" are sometimes used for convenience where references are made to Shell plc and its subsidiaries in general. Likewise, the words "we", "us" and "our" are also used to refer to Shell plc and its subsidiaries in general or to those who work for them. These terms are also used where no useful purpose is served by identifying the particular entity or entities. "Subsidiaries", "Shell subsidiaries" and "Shell companies" as used in this information sheet refer to entities over which Shell plc either directly or indirectly has control.

Most information contained in this information sheet is current as of February 2025. Certain numbers in this material are rounded.



Shell in Texas

State profile
February 2025



Renewables and Energy Solutions

Wind and Solar

- Shell purchases power generated by the Prospero Wind Project in West Texas
- Shared ownership of a wind farm in Brazos, TX

Shell Energy

- Providing renewable power options to commercial and industrial customers
- Shell Energy is the exclusive energy provider of Houston's men's and women's professional soccer clubs – the Houston Dynamo FC and the Houston Dash – and is the official naming sponsor of Shell Energy Stadium



Research and Development

Shell Technology Center Houston

- For over five decades, a pivotal role in delivering technology breakthroughs to complex energy and chemical problems
- Currently undergoing improvements to bolster research capabilities for the global energy transition, including upgrading lab technology and fostering a more vibrant, collaborative environment for delivering innovative technology solutions to the market

Partnerships

- Provided \$10 million in funding to the University of Houston to create the Energy Transition Institute in 2022, dedicated to advancing the production of reliable, affordable, and cleaner energy
- The Shell–Prairie View A&M University partnership is anchored on the Nature Based Solutions research program that started in early 2022 and is investing at least \$5 million over five years in joint R&D projects. The two organizations will work together to build a state-of-the-art research facility, conduct cutting-edge research and strengthen the talent and recruitment pipeline for the industry



Chemicals and Products

Petrochemicals

- Deer Park Chemicals: Petrochemical complex in Deer Park, located along the Houston Ship Channel, manufacturing base or raw material chemicals sold to global customers to turn into thousands of consumer products
- Numerous product transportation advantages as located near major pipelines, roads, docks and rails
- Unique combination of processing equipment, control rooms, storage tanks, environmental protection equipment, office buildings, shops and warehouses

Lubricants

- Plants where lubricants are blended and packaged for sale
 - Galena Park, TX



Mobility, Trading and Supply

Shell-branded retail stations

- Approximately 1,804 Shell-owned Retail convenience stores
 - Approximately 1,500 Shell-branded retail stations
 - More than 400 EV charging stations across Texas
- Jiffy Lube®**
- 177 locations providing oil changes, tire rotations and other preventive vehicle maintenance²

Pipelines

- Approximately 439 miles of crude oil, refined product, and liquids pipelines and associated facilities

Shell Trading US Company (STUSCO)

STUSCO is made up of businesses that include acquisition, sales and trades of domestic crude oil and products; lease crude oil acquisition and marketing; marine chartering; and risk management services.

- Office – Houston, TX
- Portfolio includes buying and selling of physical crude, products, feedstocks and financial products in several exchanges
- Customers along the whole hydrocarbon supply chain: involved in the acquisition of crude from producers, transporting oil by pipeline, vessels, barges, rail and truck
- Sells crude to refineries, trades with most market participants and provides risk management services
- Shipping & Maritime provides maritime expertise, including marine chartering and assurance, commercial development and technology services to customers and partners across the industry from shipping companies to ports and beyond

Shell Energy North America

- Trades and markets natural gas, wholesale and retail power, as well as environmental and risk management products
- Top 3 power and gas marketers in the US
- Natural gas sales and purchase volume of more than 5,000 TBTu annually
- 214 million MWh – annual wholesale and retail power sales in North America
- Office – Houston, TX
- Power supply and tolling plants:
 - Phoebe – Winkler County, TX, Solar
 - Gateway – Rusk County, TX, Combined Cycle
 - Shell Technology Center Houston – Harris County, TX, Microgrid
 - Texas Friendswood – Friendswood, TX
 - Victoria City – Victoria, TX
 - Victoria Port 21 & 22 – Victoria, TX
 - SJRR Power Station – Harris County, TX

² Headquartered in Houston, Texas, Jiffy Lube® International, Inc. is a wholly owned, indirect subsidiary of Shell USA, Inc.

Disclaimer: The companies in which Shell plc directly and indirectly owns investments are separate legal entities. In this information sheet, "Shell", "Shell Group" and "Group" are sometimes used for convenience where references are made to Shell plc and its subsidiaries in general. Likewise, the words "we", "us" and "our" are also used to refer to Shell plc and its subsidiaries in general or to those who work for them. These terms are also used where no useful purpose is served by identifying the particular entity or entities. "Subsidiaries", "Shell subsidiaries" and "Shell companies" as used in this information sheet refer to entities over which Shell plc either directly or indirectly has control.

Most information contained in this information sheet is current as of January 2025. Certain numbers in this material are rounded.

